

Semester 2 Skills-Based Sample Test

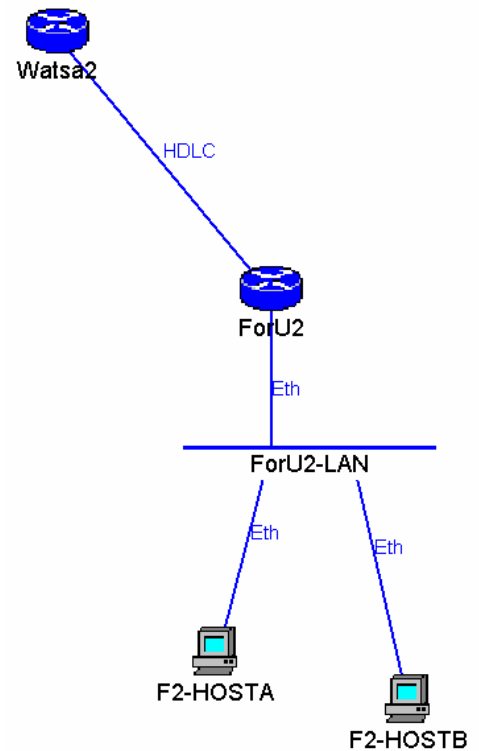
Your company, ForU United, has been bought out (a hostile takeover but a lucrative deal!) by industrial giant, Watsa Inc.

The network at ForU2 will be configured using **205.98.221.0**.

ForU United will have to connect to the Watsa network using this class C address. ForU2's local LAN has 12 hosts but Watsa expects a 100% growth in the next 5 years.

You must adhere to their subnetting scheme and use Subnetting to maximize the number of useable IPs:

- Assign the second useable subnet to the ForU-LAN
- Use the Third useable WAN subnet for your connection to Watsa2 serial1; assign the first useable IP in this subnet to Watsa2.



Watsa uses IGRP as a routing protocol (AS is 115). The serial links at the Watsa site are configured with clocking.

1. Create your addressing scheme using subnetting.
 2. Select the required hardware and attach your router to Watsa's head office router (assign first useable IP to Watsa2's Port).
 3. Configure your router(s) and test connectivity. Add descriptions for each port on the routers and a message of the day.
 4. Use **ForU2** for Console and Telnet passwords; use **Sktst** for Secret password.
 5. Attach two hosts to each Ethernet subnet (one in the first 7 IPs and one with a number greater than 7th).
- _____ Initials
6. Watsa Inc. is concerned that an unauthorized user from your organization may get access to their network. Create an access list on ForU2's router that will restrict access to the head office at Watsa. Telnet access will be allowed for network administrator only. ForU has reserved useable host numbers less than 7th for network admin staff. The network administrators will use these host addresses. Other IP protocols should work.

Semester 2 Skills-Based Sample Test

- 7. Apply and test the access list(s) using a host that should work and one that should not.

_____ Initials

- 8. Verify that the system works as intended.
- 9. There will be 3 errors inserted.
- 10. Document, Troubleshoot and correct the errors.

_____ Initials

- 11. Print your router configuration file and hand in all documentation.

Marks:

- 1. Connect Network correctly _____
- 2. Program Router and LAN _____
- 3. ACL _____
- 4. Troubleshoot _____
- 5. Documentation _____

Deduct (for Help):

Semester 2 Skills-Based Sample Test

Notes: